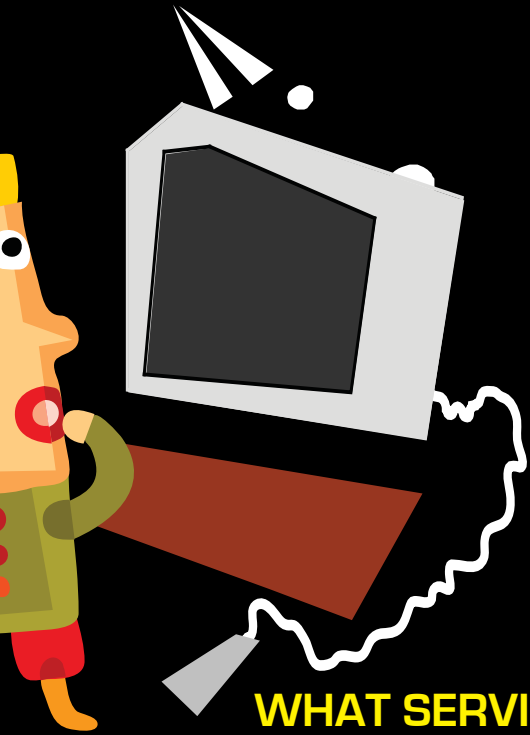


GMHeLP GMHeLP



WHAT SERVICES CAN YOU EXPECT AS AN EXTERNAL MEMBER?

Core services available at each library:

- Reference enquiries
- Loan of a minimum of 3 items
- Joint library catalogue
- Photocopying facilities
- Study area
- Induction to the library when you join

Additional services available from some libraries

- Document supply
- Information skills training
- Electronic resources
- Internet access
- Literature search service



GREATER MANCHESTER
HEALTH LIBRARIES
PARTNERSHIP

...your access to learning

NORTH WEST HEALTH LIBRARIES JOINT CATALOGUE

The libraries in Greater Manchester have created a joint catalogue of all their holdings, in partnership with other North West NHS libraries. You can search this catalogue by going to www.nwhealthlibraries.nhs.uk

This website also provides contact details of all the libraries participating in GMHeLP.

E-BOOKS

In addition to 150+ mental health book titles on offer nationally, GMHeLP provides a further 100+ general health related titles.

These e-books can be accessed through the National Library for Health at www.library.nhs.uk and require an NHS Athens username and password.

For further details of GMHeLP libraries visit:

www.nwhealthlibraries.nhs.uk

Easy Peasy

access to learning
and resources for
NHS staff



GMHeLP

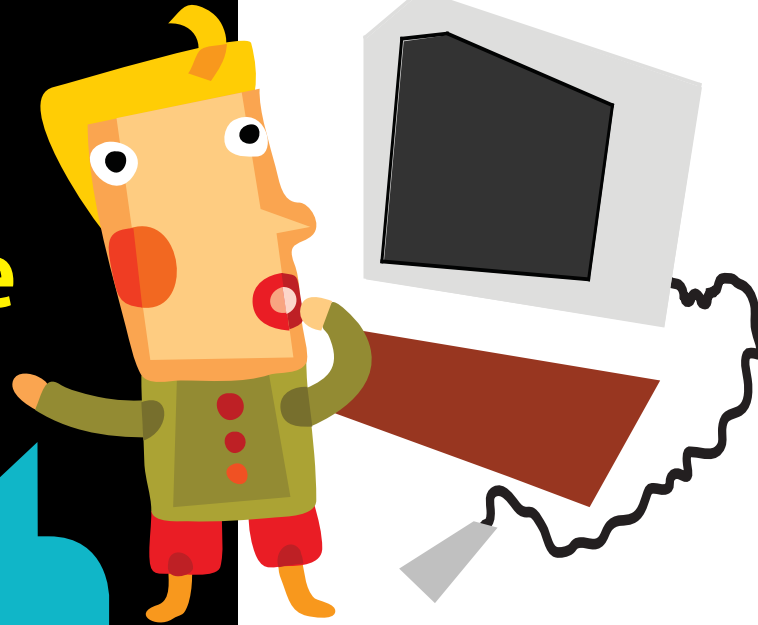
Health library access...

MADE EASY!

now you can
have access to

many more

health library
resources...



...and it
couldn't
be easier!

"This is a great resource
for NHS Staff and students
across Greater Manchester
and a really good example
of Trusts working together"

**Chris Jeffries, Associate Director of
Commissioning and Professional
Education, NHS North West**

WHAT IS GMHeLP?

GMHeLP is a collaboration of
NHS Trust Library Services in
Greater Manchester that aims to
widen access to knowledge and
information services.

WHO CAN ACCESS GMHeLP?

All NHS staff working in
Greater Manchester are
eligible, including students
on placement.



WHAT'S IN IT FOR ME?

GMHeLP entitles you to join any NHS library in Greater Manchester as an external member.

External membership will entitle you to a core set of services available from each library you join. Additional services are provided by some libraries in the scheme.

Just take your staff or student ID along to the library you wish to join, and you will be asked to complete a membership form.

WHICH IS MY HOME LIBRARY?

For NHS staff your home library is the library which serves the NHS Trust by which you are employed.

To find your home library visit www.nwhealthlibraries.nhs.uk

For students on placement your home library is the library which serves the Trust in which you are on placement.